

ROCKET

HIGH PERFORMANCE INJECTION TECHNOLOGY

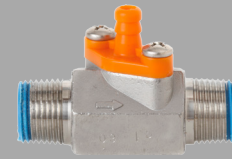
TECHNICAL GUIDE

CHEMICAL INJECTING HAS NEVER BEEN SO SIMPLE

ROCKET

HIGH PERFORMANCE INJECTION TECHNOLOGY

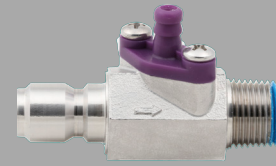
Single Barb	Dual Barb	QC Rocket	Flow Rate @ 200 PSI	Color	Flow Orifice
211.057	221.057	311.057	1.1 GPM	Red	0.057
211.070	221.070	311.070	1.7 GPM	Orange	0.070
211.083	221.083	311.083	2.4 GPM	Grey	0.083
211.086	221.086	311.086	2.6 GPM	Blue	0.086
211.098	221.098	311.098	3.4 GPM	Light Green	0.098
211.116	221.116	311.116	4.3 GPM	Purple	0.116
211.125	221.125	311.125	5.3 GPM	Dark Green	0.125



SINGLE BARB



DUAL BARB



QC ROCKET

200 PSI FLOW AND DILUTION DATA FOR STANDARD ROCKETS

Flow Rate (GPM) @ 200 PSI	1.1	1.7	2.4	2.6	3.4	4.3	5.3	
Metering Barb Color	Red	Orange	Gray	Blue	Light Green	Purple	Dark Green	
Nozzle Size	0.057"	0.070"	0.083"	0.086"	0.098"	0.116"	0.125"	
Metering Tip	Copper	1:277	1:426	1:582	1:715	1:812	1:1108	1:1441
	Pumpkin	1:179	1:283	1:389	1:440	1:603	1:709	1:878
	Burgundy	1:157	1:260	1:366	1:395	1:519	1:608	1:777
	Lime	1:114	1:197	1:274	1:299	1:408	1:459	1:601
	Tan	1:101	1:178	1:207	1:269	1:366	1:418	1:545
	Orange	1:87	1:136	1:170	1:201	1:259	1:389	1:405
	Turquoise	1:85	1:135	1:169	1:200	1:257	1:277	1:404
	Pink	1:50	1:74	1:103	1:114	1:152	1:185	1:229
	Lt. Blue	1:38	1:58	1:71	1:90	1:119	1:146	1:182
	Brown	1:34	1:56	1:66	1:86	1:113	1:133	1:172
	Red	1:28	1:42	1:60	1:64	1:87	1:110	1:132
	White	1:24	1:37	1:56	1:58	1:76	1:95	1:114
	Green	1:22	1:33	1:46	1:48	1:68	1:82	1:103
	Blue	1:17	1:25	1:35	1:31	1:53	1:64	1:75
	Yellow	1:11	1:17	1:23	1:24	1:33	1:43	1:51
	Black	1:8.7	1:13	1:19	1:19	1:25	1:31	1:40
	Purple	1:6.4	1:6.5	1:9	1:10	1:13	1:16	1:19
Gray	1:6.3	1:5.9	1:7.8	1:8	1:10	1:12	1:15	
No Tip	1:6.1	1:5.1	1:6.4	1:6.5	1:7.4	1:7.6	1:9.5	

NOTE: Dilution Ratios are based on 200 PSI inlet pressure and 90 PSI outlet pressure. Dilution Ratios are based on drawing water or water-thin product through the metering tip. Different viscosities and temperatures will affect the draw rates and lower the amount of fluid inducted increasing the overall dilution ratio making the injectors more lean.

Dual Metering Barb Information Available Upon Request

**NOZZLE AND BARB KITS FOR SINGLE BARBS

21.057	21.070
21.083	21.086
21.098	21.125

**NOZZLE AND BARB KITS FOR DUAL BARBS

22.057	22.070
22.083	22.086
22.098	22.125

*CHECK VALVE KITS

21.001	Single Barb Kit
21.002	Dual Barb Kit

A LOOK INSIDE: WHAT MAKES THE ROCKET FLY?

**Removable metering barb for ease of maintenance and repair

*Teflon ball for chemical compatibility and check valve to keep chemical at the ready

*Hastalloy spring for robust chemical compatibility

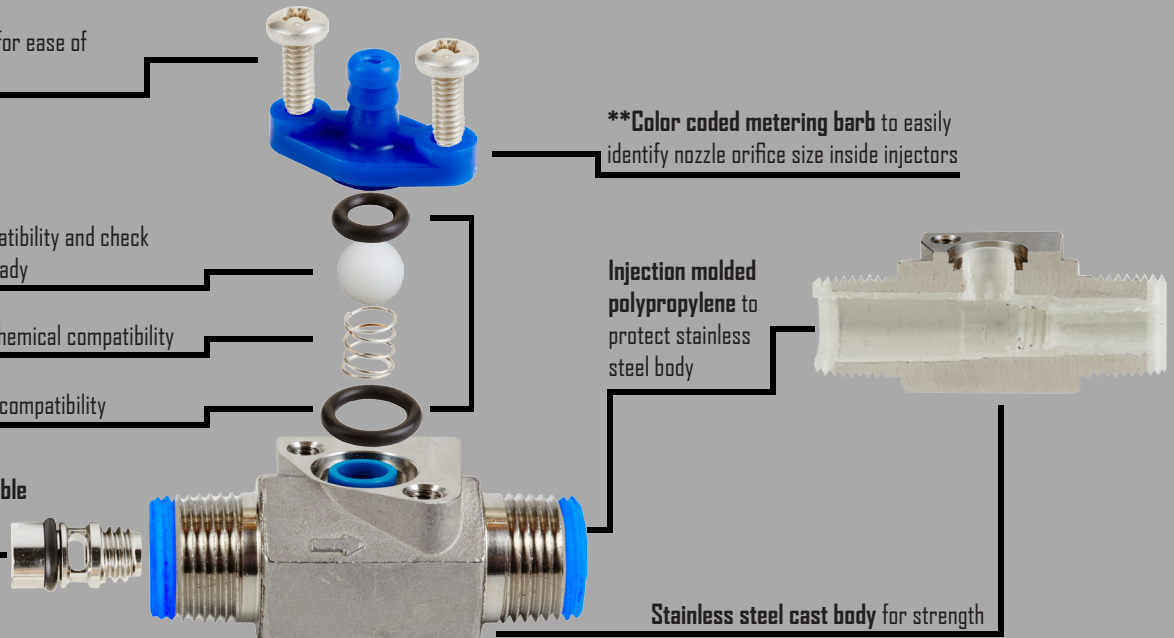
*Aflas seals for best chemical compatibility

**316 Stainless Steel removable nozzle for strength and ability to repair

**Color coded metering barb to easily identify nozzle orifice size inside injectors

Injection molded polypropylene to protect stainless steel body

Stainless steel cast body for strength



100 PSI FLOW AND DILUTION DATA FOR STANDARD ROCKETS

ROCKET ACCESSORIES



PART # 21.HQCA
3/8" FNPT
ADAPTER



PART # 21.RQCC
3/8" NPT X 3/8"
FQC FITTING



PART # 21.002
3/8" NPT INLET
BY 3 3/8" NPT
OUTLET

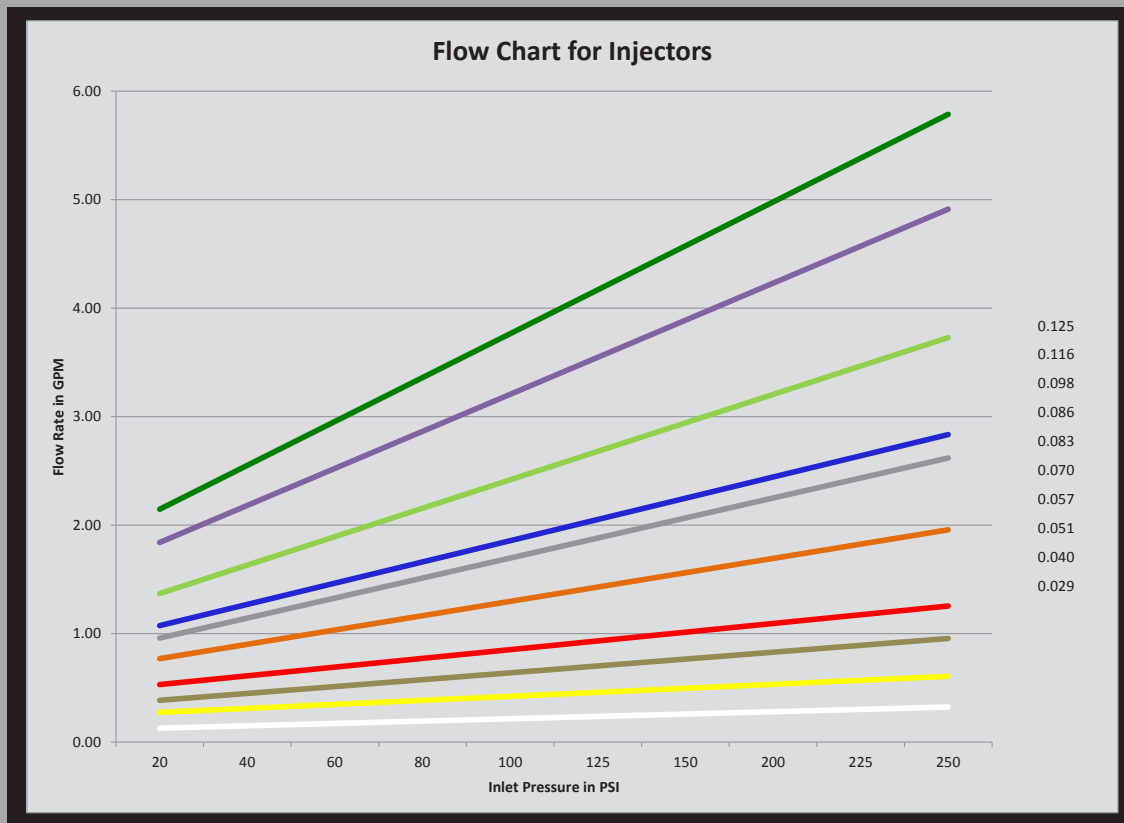


SHOWN WITH
INJECTORS
INSTALLED

Flow Rate (GPM) @ 100 PSI	0.8	1.3	1.6	1.75	2.3	3.2	3.7	
Metering Barb Color	Red	Orange	Gray	Blue	Light Green	Purple	Dark Green	
Nozzle Size	0.057"	0.070"	0.083"	0.086"	0.098"	0.116"	0.125"	
Metering Tip	Copper	1:202	1:384	1:399	1:467	1:714	1:796	1:945
	Pumpkin	1:169	1:305	1:346	1:387	1:546	1:499	1:787
	Burgundy	1:136	1:228	1:294	1:308	1:416	1:451	1:630
	Lime	1:103	1:151	1:242	1:229	1:268	1:328	1:473
	Tan	1:91	1:143	1:205	1:197	1:238	1:282	1:426
	Orange	1:61	1:79	1:170	1:136	1:190	1:267	1:270
	Turquoise	1:60	1:78	1:169	1:135	1:143	1:217	1:269
	Pink	1:36	1:55	1:75	1:77	1:95	1:135	1:171
	Lt. Blue	1:31	1:45	1:65	1:67	1:86	1:109	1:148
	Brown	1:27	1:35	1:55	1:58	1:76	1:101	1:125
	Red	1:21	1:30	1:45	1:48	1:60	1:82	1:102
	White	1:19	1:24	1:34	1:39	1:44	1:67	1:79
	Green	1:16	1:20	1:29	1:33	1:40	1:61	1:65
	Blue	1:13	1:15	1:24	1:26	1:35	1:46	1:51
	Yellow	1:9.4	1:11	1:18	1:20	1:26	1:29	1:39
	Black	1:8	1:8.9	1:12	1:13	1:16	1:23	1:27
	Purple	1:7.3	1:7.3	1:9.5	1:10	1:12	1:11	1:19
	Gray	1:7.1	1:6.8	1:7	1:7.5	1:7.7	1:9.4	1:11
	No Tip	1:7	1:6.2	1:6.1	1:6.7	1:5.7	1:7.8	1:8

NOTE: Dilution Ratios are based on 100 PSI inlet pressure and 45 PSI outlet pressure. Dilution Ratios are based on drawing water or water-thin product through the metering tip. Different viscosities and temperatures will affect the draw rates and lower the amount of fluid inducted increasing the overall dilution ratio making the injectors more lean.

Dual Metering Barb Information Available Upon Request

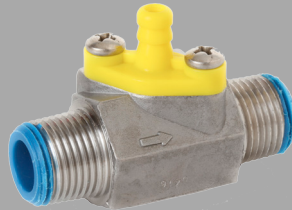


LOW FLOW ROCKETS FOR SELF SERVE APPLICATIONS

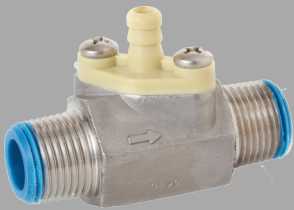
These low flow Rockets (1/4 GPM, 1/2 GPM, and 3/4 GPM) are perfect for low flow applications. They have a higher pressure drop to accomplish the vacuum pulled by the venturi. They still have all the great benefits of the rocket injectors that the industry has come to love.



PART #
211.029



PART #
211.040



PART #
211.051

100 PSI Flow & Dilution Table

Flow Rate (GPM) @ 100 PSI	0.25	0.40	0.60
Metering Barb Color	White	Yellow	Tan
Nozzle Size	0.029"	0.040"	0.051"
Outlet Pressure	25 PSI	30 PSI	35 PSI
Copper	1:65	1:100	1:178
Pumpkin	?	1:82	1:145
Burgundy	?	1:65	1:109
Lime	1:76	1:49	1:75
Tan	1:65	1:48	1:71
Orange	1:50	1:35	1:50
Turquoise	1:40	1:27	1:39
Pink	1:30	1:18	1:27
Lt. Blue	1:29	1:15	1:24
Brown	1:27	1:13	1:20
Red	1:22	1:11	1:17
White	1:17	1:8.6	1:14
Green	1:16	1:8.6	1:12
Blue	1:14	1:8.6	1:9.5
Yellow	1:13	1:8.6	1:9.4
Black	1:13	1:8.5	1:9.3
Purple	1:12	1:8.5	1:9.3
Gray	1:10	1:8.5	1:9.3
No Tip	1:9.6	1:8	1:9

NOTE: Dilution Ratios are based on drawing water or water-thin product through the metering tip. Different viscosities and temperatures will affect the draw rates and lower the amount of fluid inducted increasing the overall dilution ratio making the injectors more lean.

Dual Metering Barb Information Available Upon Request

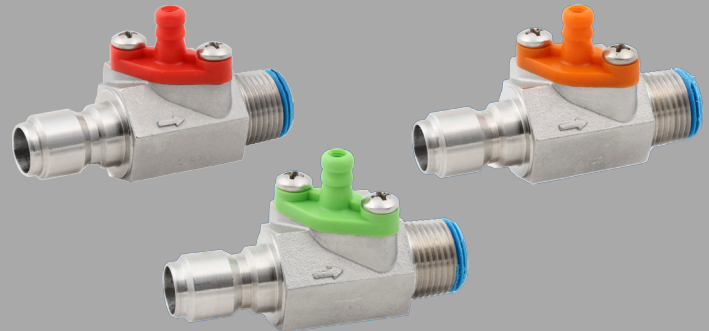
200 PSI Flow & Dilution Table

Flow Rate (GPM) @ 200 PSI	0.30	0.55	0.85
Metering Barb Color	White	Yellow	Tan
Nozzle Size	0.029"	0.040"	0.051"
Outlet Pressure	50 PSI	60 PSI	70 PSI
Copper	1:96	1:141	1:130
Pumpkin	1:77	1:116	1:118
Burgundy	1:57	1:91	1:107
Lime	1:38	1:66	1:96
Tan	1:35	1:64	1:85
Orange	1:26	1:47	1:64
Turquoise	1:20	1:35	1:46
Pink	1:13	1:23	1:31
Lt. Blue	1:13	1:20	1:29
Brown	1:12	1:17	1:26
Red	1:11	1:15	1:22
White	1:10	1:12	1:18
Green	1:10	1:10	1:16
Blue	1:9.9	1:8.4	1:13
Yellow	1:9.5	1:7	1:10
Black	1:9	1:5.6	1:7.8
Purple	1:8.6	1:5.2	1:6.9
Gray	1:8.2	1:4.8	1:5.9
No Tip	1:8.1	1:4.7	1:5.5

NOTE: Dilution Ratios are based on drawing water or water-thin product through the metering tip. Different viscosities and temperatures will affect the draw rates and lower the amount of fluid inducted increasing the overall dilution ratio making the injectors more lean.

Dual Metering Barb Information Available Upon Request

QC ROCKET



The QC Rocket is the industry's first quick connect injector utilizing a standard quick connect fitting. The standard quick connect is available off the shelf from many different sources and makes your Rocket ready to fly faster than ever before. The QC Rocket still has the same features the industry has come to know and love. It still is the most efficient, most versatile, and only repairable injector out there. The stainless steel nozzle is still removable with a 7/32" Allen wrench and the barb is still able to be taken off and cleaned out when necessary. The QC Rocket is available now.

World Headquarters: DEMA Engineering Company
 10020 Big Bend Blvd. • St. Louis, MO 63122 U.S.A. Tel: 1-800-325-3362 • Fax: 314-965-8319
 Web site: www.demaeng.com • E-mail: sales@demaeng.com

